



# PRODUCT CATALOUGE



[ozeroalumetal.com.tr](http://ozeroalumetal.com.tr)





Özeroğlu Metal

## Get to Know About Us!

The company, initially named "Özeroğlu Metal Adnan Eroğlu", was set up in 1991. Özeroğlu Metal, which was then engaged in the trading and cutting of plates over an area of 100 m<sup>2</sup>, adopted its current name in the early 2000s and ventured into the Steel Roll Slitting & Cut-to-Length business. With additional investments and a quality-oriented production style throughout the years, Özeroğlu Metal has outperformed its competitors in the domestic market and achieved tremendous success by increasing its operation site to 12,500 m<sup>2</sup>.

Starting the production of Reinforced PVC Sheet Profiles in 2007 and Drywall Profiles in 2010, Özeroğlu Metal further expanded its product portfolio. Various industries and companies that benefit from our services include Automotive Supply Industry, Construction Materials, Whiteware Supply Industry, Machinery & Spare Parts Manufacturing, Light Steel Construction Systems, Panel Radiator, Shelf Manufacturing, Reinforcement Plate Manufacturing, Steel Door Manufacturing, Roof-Facade Manufacturing, Shutter Systems Manufacturing, Furniture and Accessory components and Heating, Cooling and Ventilation Systems.

### Mission

To meet customer expectations at the highest level with a wide range of products, offering the optimum quality-price ratio.

### Vision

To become a global brand, leaving its trail in every field where iron and steel come to life.

### Core Values at Özeroğlu



Code of Ethics



Happy Customer



Our Perspective  
Toward Development



Reliability  
of Our Company



# Contents

Please refer to the page numbers to review the contents of our Catalog.



## DRYWALL PROFILE

### Suspended Ceiling Profiles

Ceiling U Profile, Ceiling C Profile, Ceiling L Profile, Ceiling Omega Profile

01 - 03

### Partition Wall Profiles

Wall C Profiles, Wall U Profiles

04

### Exterior Profiles

M Profile, J Profile

05

### Corner Profiles

Perforated Corner Profiles, Rough Plaster Corner Profiles, Ceiling L Profiles

06

## PIPE PROFILES, REINFORCED PVC PROFILES

07

## IRON STEEL

Galvanized Sheet, Cold Rolled (DKP) Coil/Pack Sheet, Hot Rolled Pickled & Oiled (HRPO) Coil/Pack Sheet, Coil Slitting Sheet, Plate Sheet

08-09

## ACCESSORY

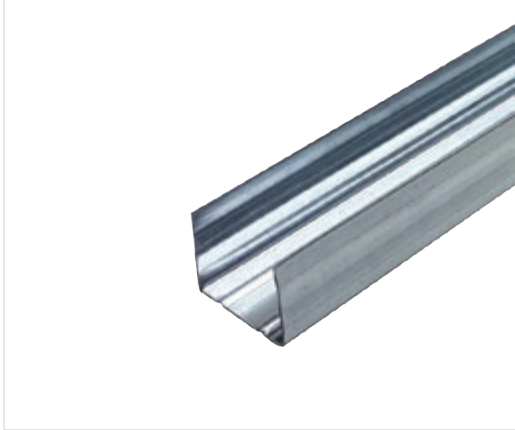
Staples, Hanger Bars, Hanger Tongs, Steel Anchors, Double Spring Tongs, Attachments, Clips, Plastic Anchors, Washer Head Screws and Screws

10-13

ÖZEROĞLU

# DRYWALL PROFILE

## SUSPENDED CEILING PROFILES



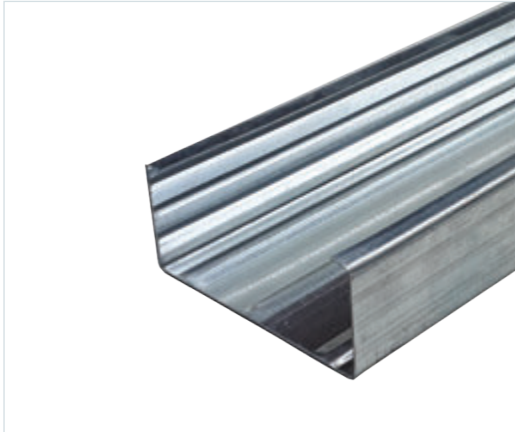
Product Code: 153 001

### Ceiling U Profile

These profiles create the framework in Gypsum Suspended Ceiling Systems and are used on floors and ceilings and wall cladding systems with staples.

Packaging	Fields of Application	Technical Specifications	Type of Steel
24 Pcs/ Tied	Gypsum suspended ceiling systems, Stapled suspended ceiling systems	Thickness : 0.35 - 0.60 mm Length : 3000 mm Measurement : <b>W:</b> 28mm <b>H:</b> 23-27mm	<b>DX51D</b> (as per EN 10346 Standards.)

The standard length is 3000 mm. The length can be produced in the range of 2000-6000 mm as per your request.



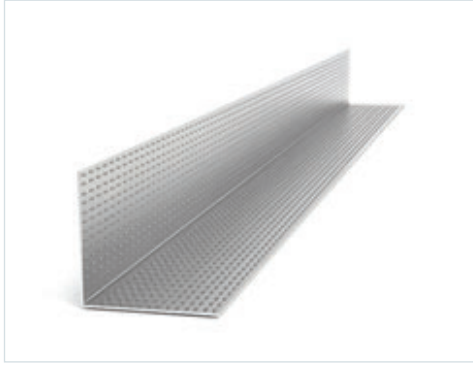
Product Code: 153 002

### Ceiling C Profile

This profile is used as the main and auxiliary load-bearing element in Gypsum Suspended Ceiling Systems and the main load-bearing element in wall cladding systems with staples.

Packaging	Fields of Application	Technical Specifications	Type of Steel
12 Pcs/ Tied	Gypsum suspended ceiling systems	Thickness : 0.40 - 0.60 mm Length : 3000 mm Measurement : <b>W:</b> 68mm <b>H:</b> 27mm	<b>DX51D</b> (as per EN 10346 Standards.)

The standard length is 3000 mm. The length can be produced in the range of 2000-6000 mm as per your request.



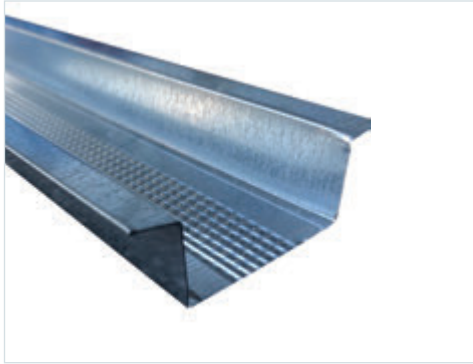
Product Code: 153 003

### Ceiling L Profile

This profile is the main load-bearing element in Gypsum Suspended Ceiling Systems.

Packaging	Technical Specifications	Type of Steel
50 Pcs/ Tied	Thickness : 0.40 - 0.50 mm Length : 3000 mm Measurement : 25/25 - 30/30	<b>DX51D</b> (as per EN 10346 Standards.)

The standard length is 3000 mm. The length can be produced in the range of 2000-6000 mm as per your request.



Product Code: 153 010

### Ceiling Omega Profile

Ceiling Omega Profile is used in metal construction systems established in the construction of gypsum board suspended ceilings.

Packaging	Fields of Application	Technical Specifications	Type of Steel
12 Pcs/ Tied	Gypsum suspended ceiling systems	Thickness : 0.40 - 0.50 mm Length : 3000 mm Measurement : 50/22/12 - 36/22/12	<b>DX51D</b> (as per EN 10346 Standards.)

The standard length is 3000 mm. The length can be produced in the range of 2000-6000 mm as per your request.



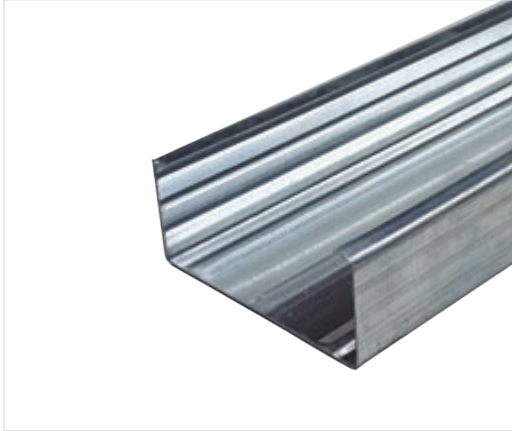
### Omega Channel U Profile

Omega Channel U Profile is used in metal construction systems established in the construction of gypsum board suspended ceilings.

Packaging	Fields of Application	Technical Specifications	Type of Steel
12 Pcs/ Tied	Gypsum suspended ceiling systems	Thickness : 0.40-0.50 mm Length : 3000 mm Measurement : <b>W: 38mm H: 11mm</b>	<b>DX51D</b> (as per EN 10346 Standards.)

The standard length is 3000 mm. The length can be produced in the range of 2000-6000 mm as per your request.

## PARTITION WALL PROFILES



### Wall C Profiles

These profiles are applied vertically in Gypsum Partition Wall and Wall Cladding Systems.

#### Packaging

12 Pcs/ Tied

#### Type of Steel

**DX51D** (as per EN 10346 Standards.)

#### Fields of Application

Partition wall systems

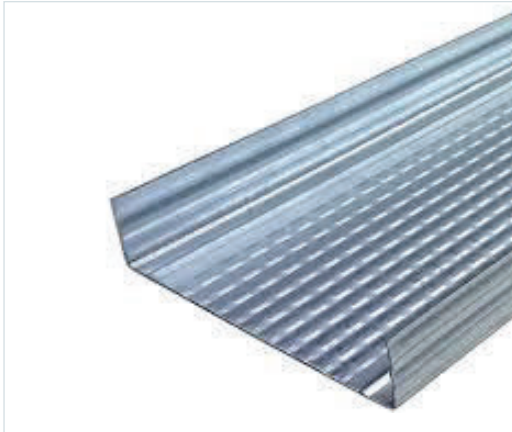
#### Technical Specifications

Thickness : 0.40 - 0.70 mm  
Length : 3000 mm

#### Measurement

**153 003 Wall C50**  
W: 48.5mm H: 35-40-45mm  
**153 004 Wall C75**  
W: 73.80mm H: 35-40-45mm  
**153 004 Wall C100**  
W: 98.8mm H: 35-40-45mm

The standard length is 3000 mm. The length can be produced in the range of 2000-6000 mm as per your request.



### Wall U Profiles

These profiles are applied horizontally to create the framework for Partition Wall Systems.

#### Packaging

12 Pcs/ Tied

#### Type of Steel

**DX51D** (as per EN 10346 Standards.)

#### Fields of Application

Partition wall systems

#### Technical Specifications

Thickness : 0.40 - 0.60 mm  
Length : 3000 mm

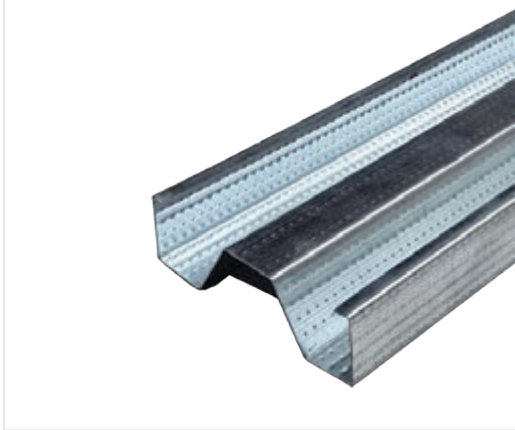
#### Measurement

**153 006 Wall U50**  
W: 50mm H: 27-32mm  
**153 007 Wall U75**  
W: 75mm H: 27-32mm  
**153 008 Wall U100**  
W: 100mm H: 27-32mm

The standard length is 3000 mm. The length can be produced in the range of 2000-6000 mm as per your request.



## EXTERIOR FACADE PROFILES



Product Code: 153 014

### M Profiles

They are assembled to J profiles vertically with trapezoidal screws. They should not pop during screwing and have high resistance achieved by embossing. Fiber cement boards are mounted on M profiles by means of self-tapping screws.

Packaging	Fields of Application	Technical Specifications	Type of Steel
10 Pcs/ Tied	Exterior facades	Thickness : 0.45 - 0.60mm Length : 3000 mm Measurement : 80 / 25 - 70 / 22	<b>DX51D</b> (as per EN 10346 Standards.)

The standard length is 3000 mm. The length can be produced in the range of 2000-6000 mm as per your request.



Product Code: 204

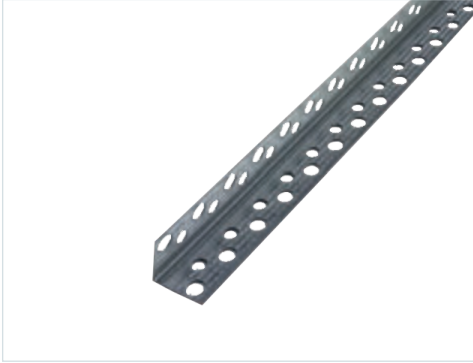
### J Profiles

J profiles are used to create the framework horizontally on L anchors, the main load-bearing elements. They are mounted with trapezoidal screws. They carry the M Profiles vertically.

Packaging	Fields of Application	Technical Specifications	Type of Steel
12 Pcs/ Tied	Exterior facades	Thickness : 1.20 - 2.00mm Length : 3000 mm Measurement : 35 / 20 /13 / 6	<b>DX51D</b> (as per EN 10346 Standards.)

The standard length is 3000 mm. The length can be produced in the range of 2000-6000 mm as per your request.

## CORNER PROFILES



Product Code: 153 009

### Perforated Corner Profile

They are galvanized thin steel sheet profiles used in gypsum plaster applications at the corners of walls and the corners of COREX partition walls and suspended ceiling systems to ensure their perpendicularity and increase their impact-resistance.

Packaging	Fields of Application	Technical Specifications	Type of Steel
50 Pcs/ Tied	They are applied to exterior corners of partition walls, cladding walls and suspended ceiling applications created with indoor plasterboard systems.	Thickness : 0.25 - 0.32 mm Length : 2700 mm Measurement : 20/20 - 24/24	<b>DX51D</b> (as per EN 10346 Standards.)

The standard length is 2700 mm. The length can be customized to your projects.



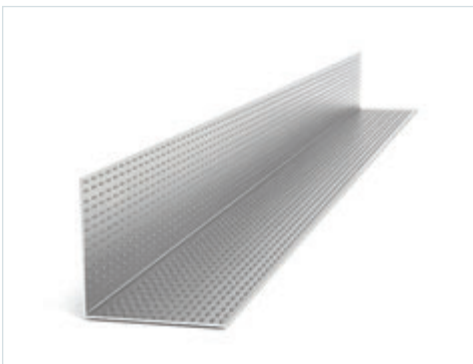
Product Code: 153 010

### Perforated Corner Profile

Corner profiles enable smoother and more prominent corners in buildings and provide impact-resistance to corners against disintegration.

Packaging	Fields of Application	Technical Specifications	Type of Steel
25 Pcs/ Tied	They increase the impact-resistance of corners in plaster applications directly to surfaces such as brick, concrete, exposed concrete and pumice blocks.	Thickness : 0.35 - 0.45 mm Length : 2700 mm Measurement : 30/30 - 33/33	<b>DX51D</b> (as per EN 10346 Standards.)

The standard length is 2700 mm. The length can be customized to your projects.



Product Code: 153 013

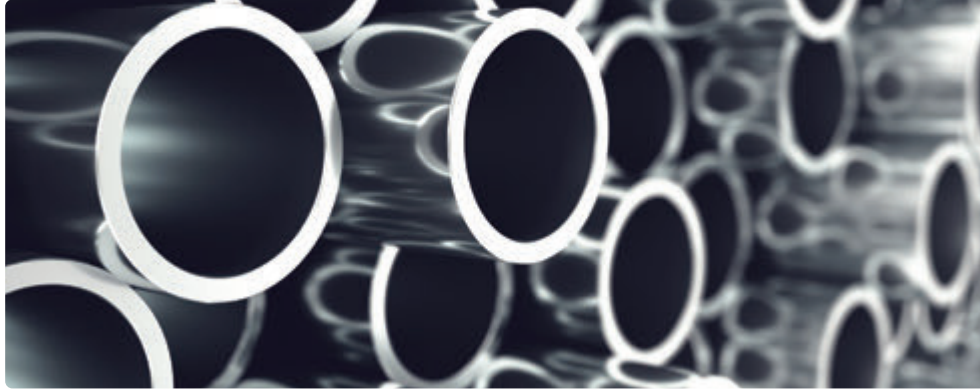
### L Corner Profiles

This profile is the main load-bearing element in Gypsum Suspended Ceiling Systems.

Packaging	Fields of Application	Type of Steel
50 Pcs/ Tied	Thickness : 0.40 - 0.50 mm Length : 3000 mm Measurement : 25/25 - 30/30	<b>DX51D</b> (as per EN 10346 Standards.)

The standard length is 3000 mm. The length can be produced in the range of 2000-6000 mm as per your request.

## PIPE PROFILES



### Manufacturing Range

#### Outer Diameter

Ø12 mm - 114 mm

#### Body Thickness

0.50 mm - 1.50 mm

#### Length

6 mt

Lengths between 1.50 and 12 mt are possible depending on pipe diameter for custom orders

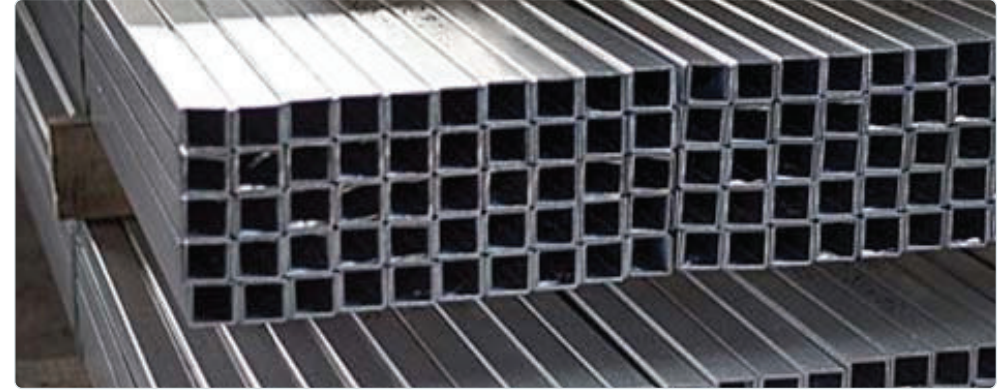
### Fields of Application

Automotive and supply industry, Construction, Whiteware, Furniture, Electrical appliances, Machinery and Energy sectors.

### Manufacturing Standards

DIN 2394, DIN 2393, TS EN 10219-2, TS EN 10305-3, TS EN 10305-2

## REINFORCED PVC PROFILES



### What is a Reinforced PVC Profile?

The reinforced sheet profile is one of the basic components of PVC door and window systems and all PVC products, creating the load-bearing framework of the PVC system and providing the plastic profile strength and durability.

In PVC window and door systems, the reinforced sheet provides sound insulation and wind resistance and allows better adhesion between systems as well as hinges and plastic, and maintains the shape and structure of the plastic profile for many years.

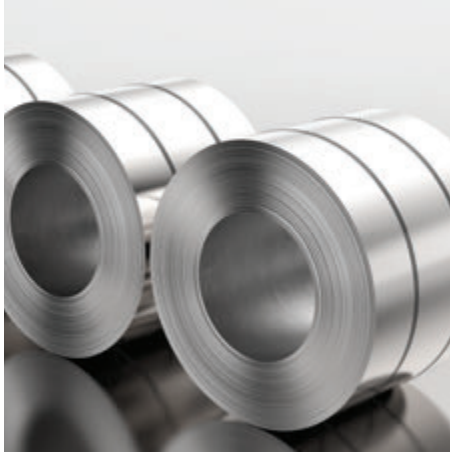
### Fields of Application

- PVC window and door systems
- Sound Insulation
- Areas requiring wind-load resistance
- TOKI and similar high-quality projects (complies with TSE and DIN standards as required by specifications.)
- In the reinforcement of profiles, the reinforced sheet can be used in many PVC materials.

Thickness	Length	Size	Type
0,80 - 2,50 mm	6 Meter Standard (Your special dimensions can also be evaluated.)	Classified as U, L, G, C, Z and box profiles.	Unwelded Open Profile

ÖZEROĞLU

**IRON STEEL**



## GALVANIZED STEEL SHEET

These products are obtained by applying the zinc coating process on both surfaces of flat steel material produced in different sizes.

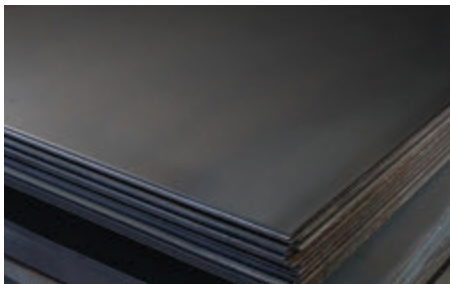
Galvanized sheets are coated with zinc (GI) or zinc-iron alloy (GA) by hot-dip method.

We offer standard and custom-made sizes in the range of 0.25 mm- 4 mm.



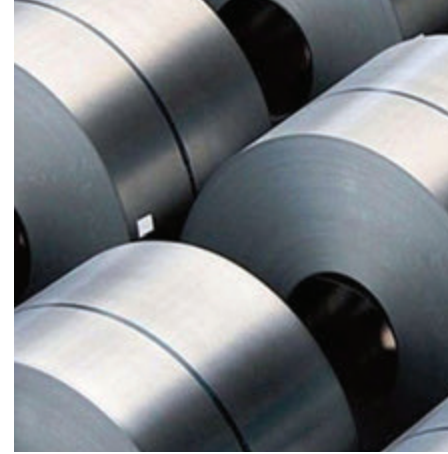
## HOT ROLLED PICKLED & OILED (HRPO) COILS/PACKAGE SHEET

HRPO Coils and Package Sheets: Surfaces of hot rolled coil sheets remain rough during the rolling process. To provide sheets with HRPO form, the hot rolled sheets are pickled in the pickling lines and thus, impurities are removed. They are presented to users in the form of coils and sheets.



## STEEL SHEETS

Materials are manufactured as rolls and slit into proper lengths in our cut-to-length lines as per customer demands. Lengths range between 0.25 mm - 4.00 mm.



## Cold Rolled (DKP) Coils/Package Sheets

They are mainly hot rolled sheets, which are subject to further processing. The steel is cooled at room temperature and then, processed in cold rolling plants following the cold and/or hot rolling process.

Sheets of different qualities and sizes are obtained with the cold rolling process. Thickness ranges between 0.25 mm - 4 mm. Width ranges between 8 mm - 1500 mm.



## COIL SLITTING

These materials are manufactured as coils and slit into proper lengths and widths at our slitting lines as per customer demands.

<b>Material Thickness</b>
0.25 - 4 mm
<b>Width</b>
8 - 1500 mm
<b>Packaging</b>

Slit coils are made ready for shipment with or without a vertical or horizontal pallet.

ÖZEROĞLU

**ACCESSORY**

## STAPLES



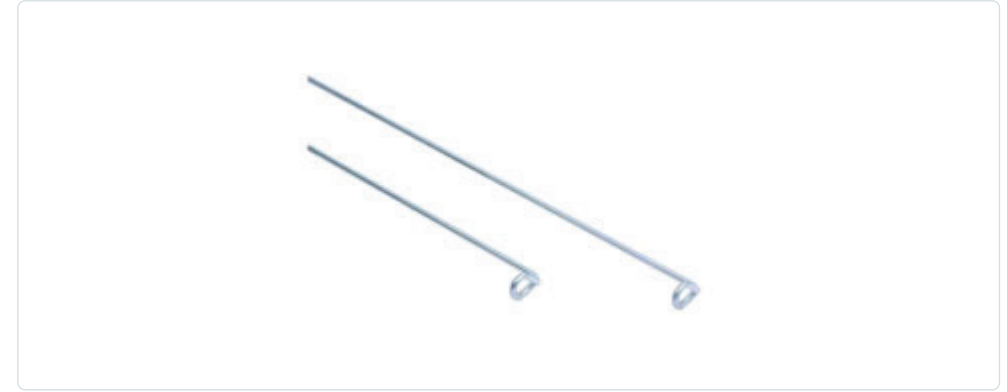
Staples are fixed to the existing slab during the construction of suspended ceilings.

They are used instead of hanger bars and hanger tongs in cases where the distance between the existing slab and the suspended ceiling is narrow.

Staples are fixed to the existing building wall during the cladding wall construction. They absorb tension of the cladding wall and increase its strength

Product Code	Product	Package Quantity (Pcs)
153 201	AGRAF 7 cm	1000
153 202	AGRAF 12 cm	250
153 204	AGRAF 15 cm	250
153 205	AGRAF 20 cm	250
153 209	AGRAF 25 cm	250
153 206	AGRAF 30 cm	250
153 207	AGRAF 40 cm	250

## HANGER BARS



Hanger tongs fasten ceiling profiles together. Steel rods, known as hanger bars, enable the connection between the ceiling and the tongs.

Product Code	Product	Package Quantity (Pcs)
153 301	Hanger Bar 20 cm	100
153 302	Hanger Bar 30 cm	100
153 303	Hanger Bar 40 cm	100
153 304	Hanger Bar 50 cm	100
153 305	Hanger Bar 60 cm	100
153 306	Hanger Bar 80 cm	100
153 307	Hanger Bar 100 cm	100
153 308	Hanger Bar 120 cm	100
153 309	Hanger Bar 150 cm	100
153 310	Hanger Bar 200 cm	100
153 311	Hanger Bar 300 cm	100

## HANGER TONGS



Hanger tongs are one group of suspended ceiling accessories with the lamellar property. They allow easy attachment of hanger bars. Hanger bars must pass through the holes in the spring.

Product Code	Product	Package Quantity (Pcs)
153 501	Hanger Tongs	500

## STEEL ANCHORS



Steel anchors for suspended ceilings are zinc-plated against corrosion and reinforced by a hanger. They enable fast and safe mounting for suspended ceilings with their short hole depth and small hole diameter.

Product Code	Product	Package Quantity (Pcs)
153 511	Steel Anchors	500

## DOUBLE SPRING TONGS

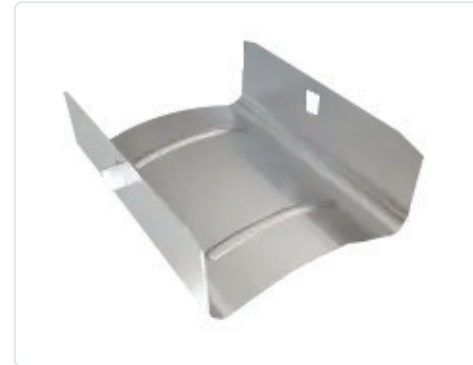


Steel anchors for suspended ceilings are zinc-plated against corrosion and reinforced by a hanger.

They enable fast and safe mounting for suspended ceilings with their short hole depth and small hole diameter.

Product Code	Product	Package Quantity (Pcs)
153 521	Double Spring Tongs	1000

## ATTACHMENTS



Attachments are used to extend the profiles and are used in suspended ceiling profiles.

Product Code	Product	Package Quantity (Pcs)
153 531	Attachments	500



## CLIPS



Drywall clips allow the profiles used in suspended ceiling applications to be engaged. The primary task of these products is fixation.

Product Code	Product	Package Quantity (Pcs)
153 541	Clips	1500

## WASHER HEAD SCREWS



22x45 Washer Head Screw is a type of wide-head deep-threaded screw that is frequently preferred for drywall profile assemblies.

Product Code	Product	Package Quantity (Pcs)
153 105	Plastic Anchors	3000

## PLASTIC ANCHORS



8 mm anchors are used to fix various products such as an apparatus, material, profile, machine, steel construction, cabinet, board, shelf, watch, etc., to a location.

Anchors vary by the field of application and strength. They can be used to fix ceilings, floors, walls and drywall, etc.

Product Code	Product	Package Quantity (Pcs)
153 551	Plastic Anchors	1000

## SCREWS

### Self-Tapping Screw

Self-drilling screws are materials that provide a strong and long-lasting adhesion and allow for the proper amount of drilling thanks to the formation of drywall.

Product Code	Product	Package Quantity (Pcs)
153 103	Self-Tapping Screw 3,5x25	1000
153 104	Self-Tapping Screw 3,5x35	1000

### Drywall Screw

They are used in all gypsum-board interior wall and suspended ceiling applications. They are used for fixing gypsum boards to galvanized profiles thinner than 0.88 mm. They are coated with anti-corrosion, double layer black phosphate.

Product Code	Product	Package Quantity (Pcs)
153 101	Drywall Screw 3,5x25	1000
153 102	Drywall Screw 3,5x25 3,5x35	1000

# NOTES

Özeroğlu Metal


A series of horizontal dotted lines for writing notes.





## ÖZEROĞLU METAL LİMİTED ŞİRKETİ

 Ömerli Mahallesi, Özçınar Sokak No: 7 Hadımköy / Arnavutköy / İstanbul

 +90 (212) 798 23 50

 info@ozeroalumetal.com.tr

 www.ozeroalumetal.com.tr